

# PROTECH®

CamLight is the registered trademark of PROTECH.



## LED CamLight

### UC-600

### series

Small light-weight design to fit into a palm  
Industry standard light which always can be attached

Aspheric-lens is arranged in front of the LED and illumination unevenness is suppressed thoroughly. It realized the flat illumination which suited wide HD shooting.

**It adopted a super high-intensity LED exclusive use aspheric-lens.**

LED CAMLIGHT ( Cable length : 20cm)

### UC-600A



LED CAMLIGHT ( Cable length : 50cm)

### UC-600i



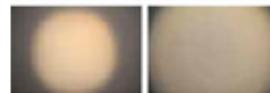
Accessory: Irradiation lens x2, Operation manual

Accessory: Irradiation lens x2, Operation manual

**It is possible to choose an irradiation lens.**

It used two kinds of aspheric-lenses for the light.  
The illuminating-angle degree of 70 degrees and 90 degrees were realized.

In recent years, the camcorder with wide lens becoming popular and the video light to support a wide lens is required. It supports 70 degrees standard wide lens and 90 degrees super wide lens. The package is including each 2 units of the illuminating-angle degree of 70 degrees and 90 degrees.



**It realized the flat light with little unevenness.**

It adopts super high-intensity 7W LED.  
By the adoption of the aspheric-lens, it realized the flat light with little unevenness.

**With the free arm, the close range shooting is possible.**

It is possible to change the height and the angle of the light easily. In the close range shooting with the wide lens, the illuminating-angle degree must be made the quite low direction. It is possible to do the lighting to the place where a cameraman wants to shoot.



**It adopts twin emitting light.**

The structure of LED CAMLIGHT is twin emitting light. There is a light emitting unit of the tungsten light and the daylight light. It succeeded in changing color temperature without the dimming by the color temperature filter which is used in the current lighting unit

**With the light luminous energies control function, it is possible to control color temperature.**

With the light luminous energies control function, the luminous energies can be freely changed. The close range shooting with dimming and the shadow extinguishing are possible.

#### LED CamLight Basic Specifications

LED	High-intensity LED
Rated voltage	DC7~12V
Color temperature	Tungsten light, Daylight light (DC12V)
Size	Approx. 60x78x95mm (WxHxD)
Weight	Approx. 280g